

# PRINCE GEORGES COUNTY HOUSING REPORT

## Residential Market Report

### Single Family Homes

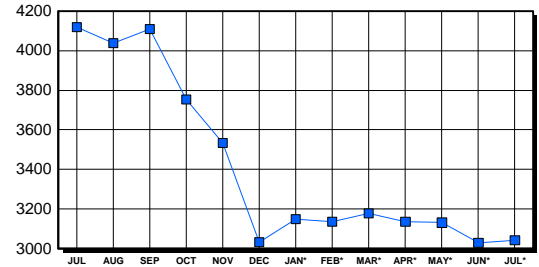
July 2000

#### LISTINGS

Price Range	New This Month			Total Active		
	2000	1999	% Change	2000	1999	% Change
0-149999	731	954	-23.4	1,825	2,616	-30.2
150000-299999	367	367	0.0	1,044	1,331	-21.6
300000-449999	25	16	56.3	125	120	4.2
450000-599999	6	6	0.0	30	30	0.0
600000-749999	1	0	0.0	4	9	100.0
750000-999999	1	1	0.0	12	4	200.0
1000000 & Over	0	1	-100.0	3	7	0.0
<b>Grand Total:</b>	<b>1,131</b>	<b>1,345</b>	<b>-15.9</b>	<b>3,043</b>	<b>4,117</b>	<b>-26.1</b>

#### INVENTORY TREND

Listings Active At End Of Month

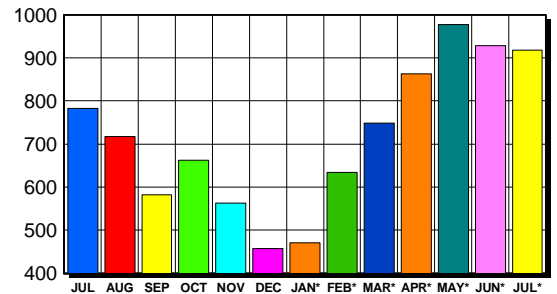


#### CONTRACTS

Price Range	New This Month			Year-To-Date		
	2000	1999	% Change	2000	1999	% Change
0-149999	600	528	13.6	3,504	3,282	6.8
150000-299999	304	253	20.2	1,938	1,663	16.5
300000-449999	11	8	37.5	79	62	27.4
450000-599999	3	0	300.0	17	11	54.5
600000-749999	0	0	0.0	1	1	0.0
750000-999999	0	0	0.0	1	0	100.0
1000000 & Over	0	0	0.0	2	0	200.0
<b>Grand Total:</b>	<b>918</b>	<b>789</b>	<b>16.3</b>	<b>5,542</b>	<b>5,019</b>	<b>10.4</b>

#### SALES TREND

Contracts Ratified Per Month



#### SETTLEMENTS

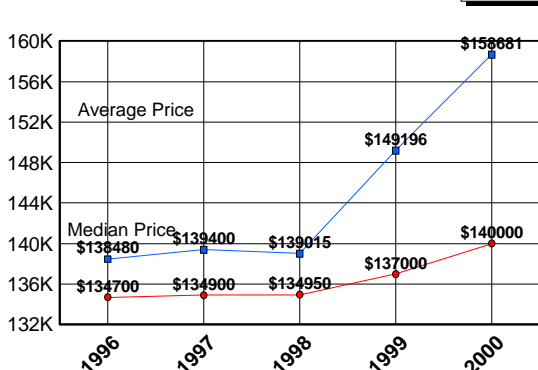
Price Range	New This Month			Year-To-Date		
	2000	1999	% Change	2000	1999	% Change
0-149999	424	401	5.7	2,651	2,792	-5.1
150000-299999	255	238	7.1	1,647	1,431	15.1
300000-449999	14	10	40.0	77	47	63.8
450000-599999	2	1	100.0	12	12	0.0
600000-749999	0	0	0.0	0	1	0.0
750000-999999	0	0	0.0	3	0	300.0
1000000 & Over	5	0	500.0	11	0	1,100.0
<b>Grand Total:</b>	<b>700</b>	<b>650</b>	<b>7.7</b>	<b>4,401</b>	<b>4,283</b>	<b>2.8</b>

#### DATA SOURCE

Metropolitan Regional Information System (MRIS)

NOTES: Properties not listed through this Multiple Listing Service are not reflected. The term "sales" represents ratified purchase contracts. Current year information is preliminary and subject to revision. Current year- to- date contract information may not equal the sum of the monthly contract totals reported in previous issues. Prices are not adjusted for inflation.

#### AVERAGE & MEDIAN PRICE



#### MARKET BY PRICE RANGE

