

Prince George's
County
Association of
REALTORS®



2004 Year in Review

Bea Rodgers, LTG



2004-2005

*Prince George's County
Association of REALTORS®
President*

RECORD YEAR—AGAIN!

2003

• Total Dollar Volume: ~\$234 million

2004 (to date)

339.5 million

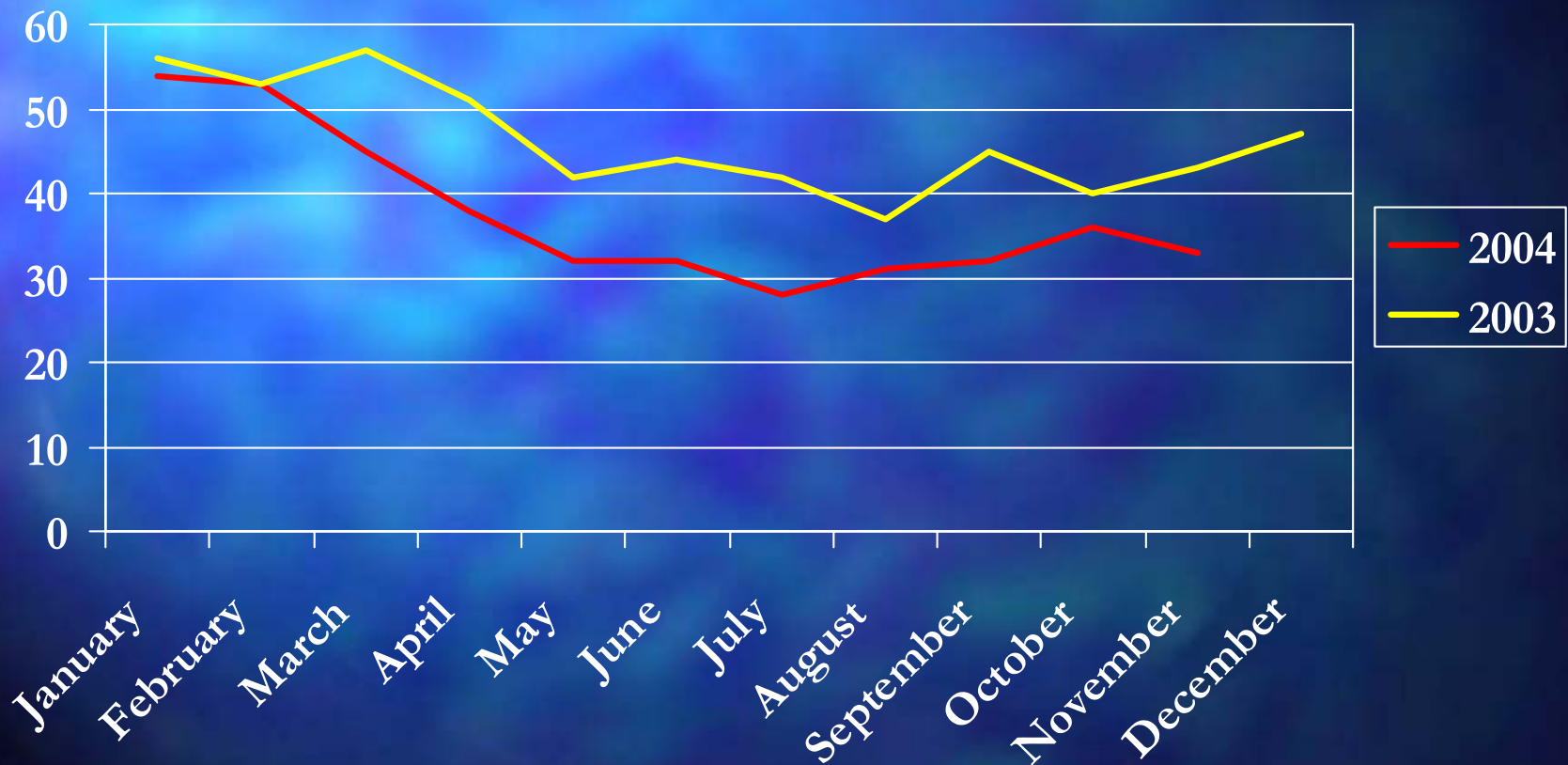
• Units Sold:

12,828

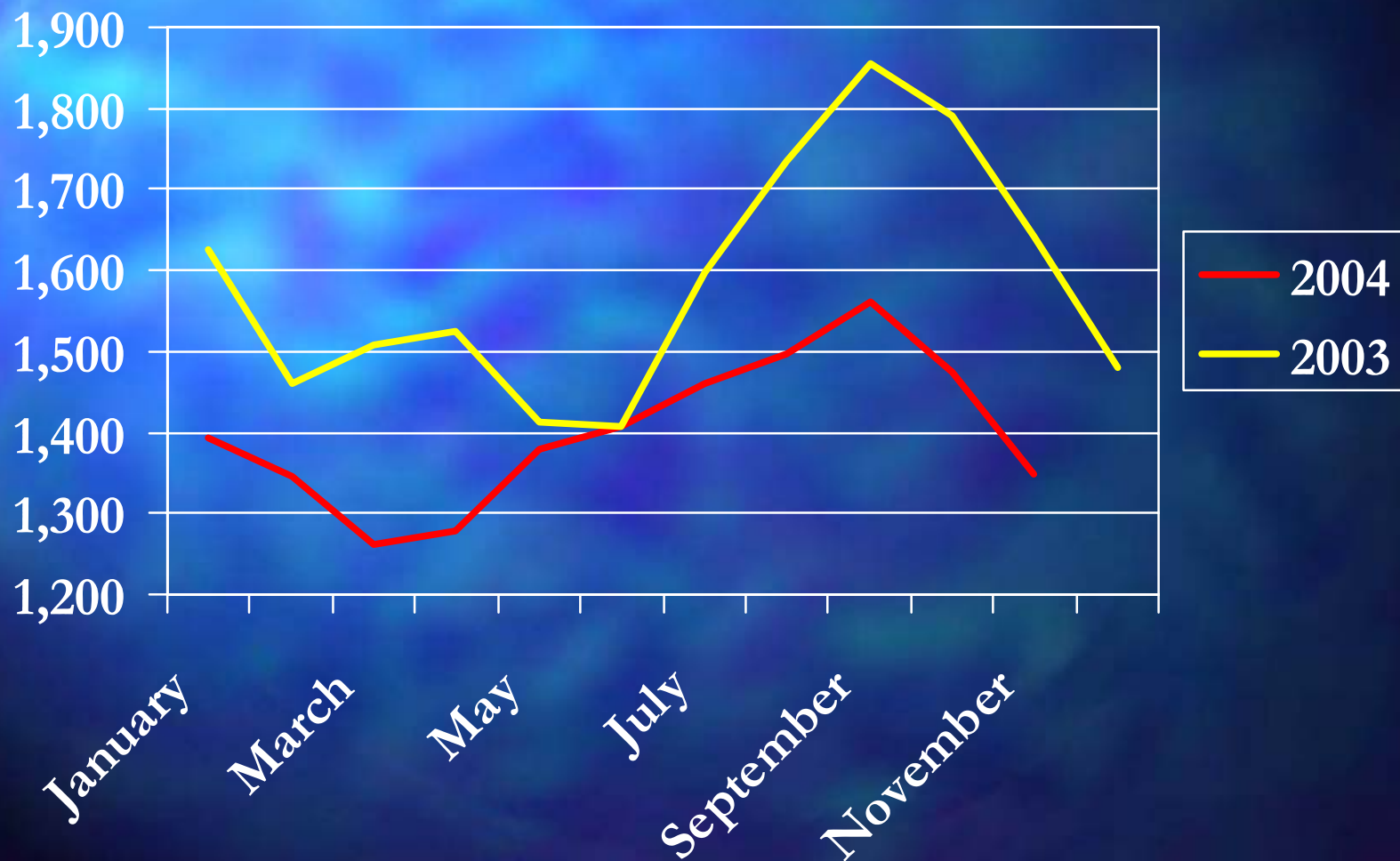
13,468

Source: Metropolitan Regional Information Systems (MRIS)

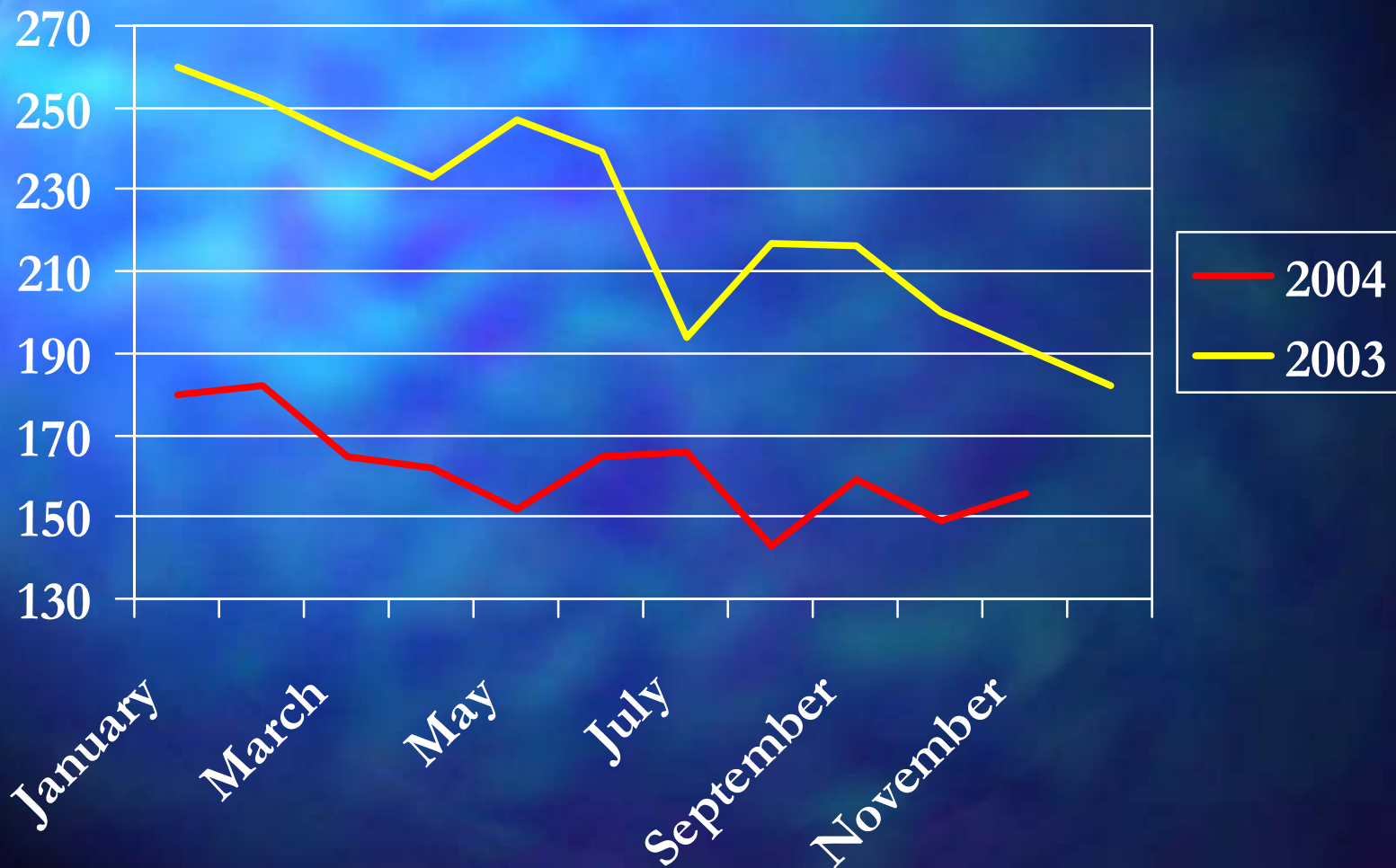
Prince George's County Homes Average Days on Market



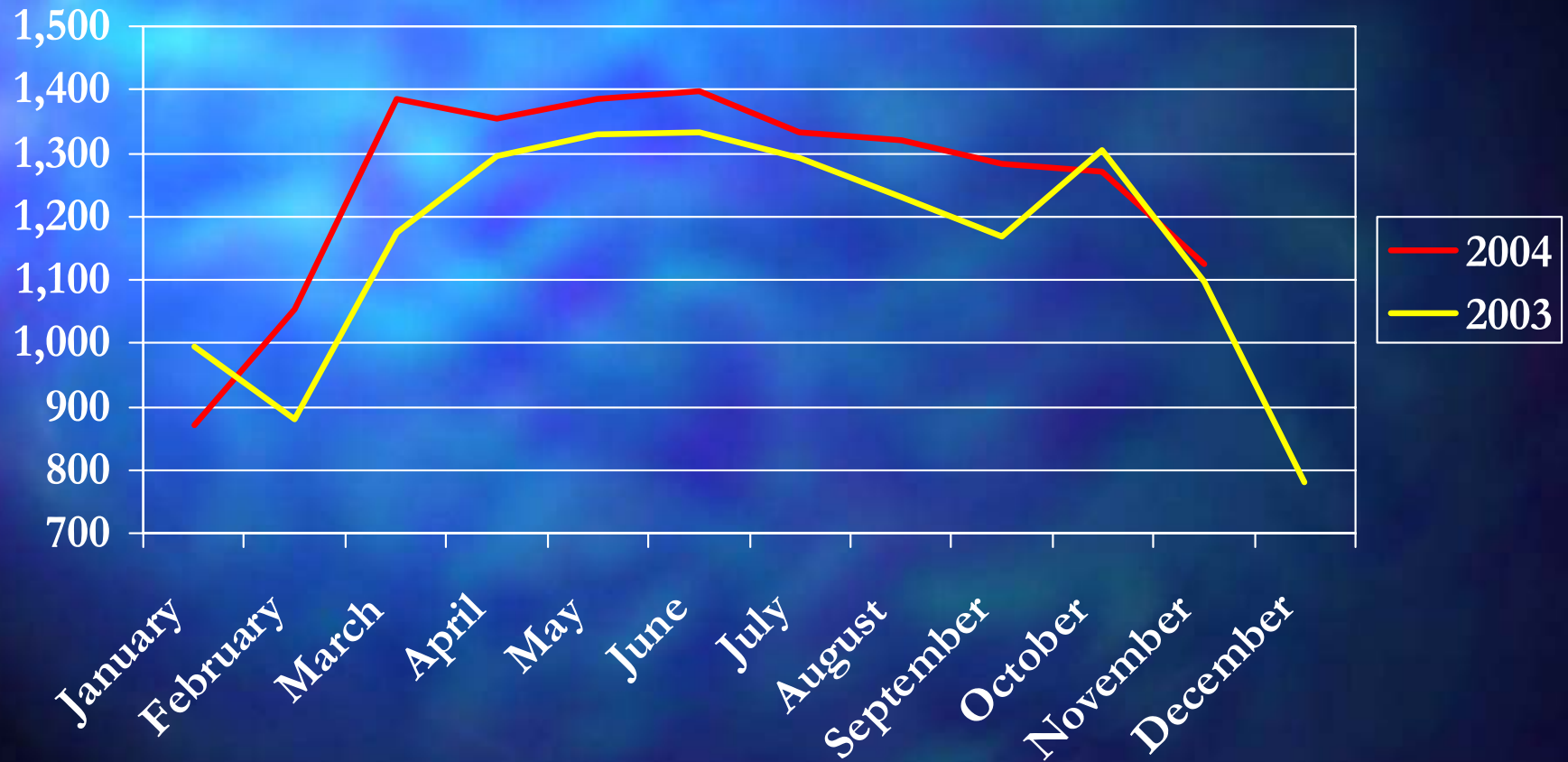
Prince George's County Listing Inventory (Single Family)



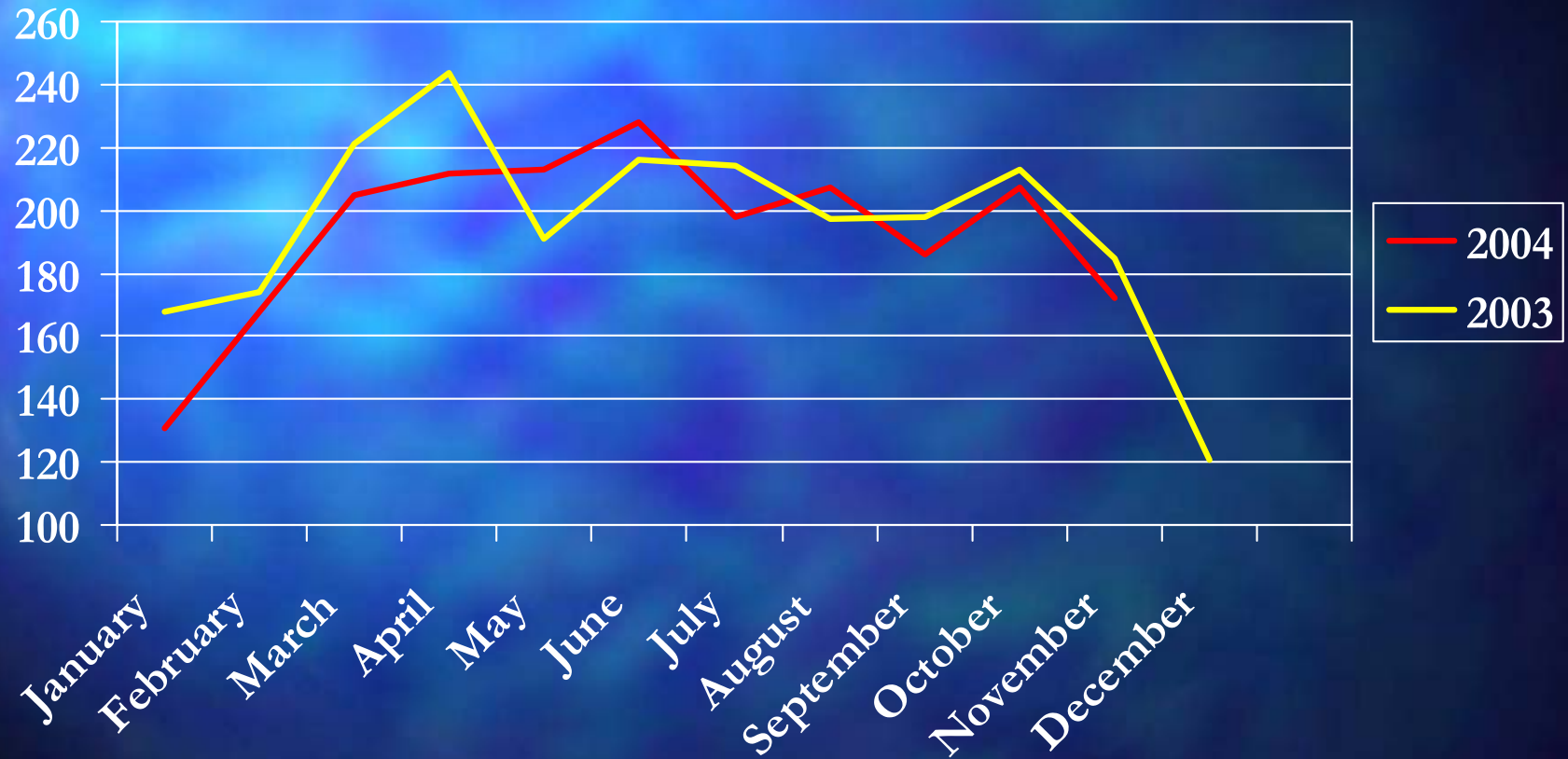
Prince George's County Listing Inventory (Condos/Co-ops)



Prince George's County New Contracts (Single Family)

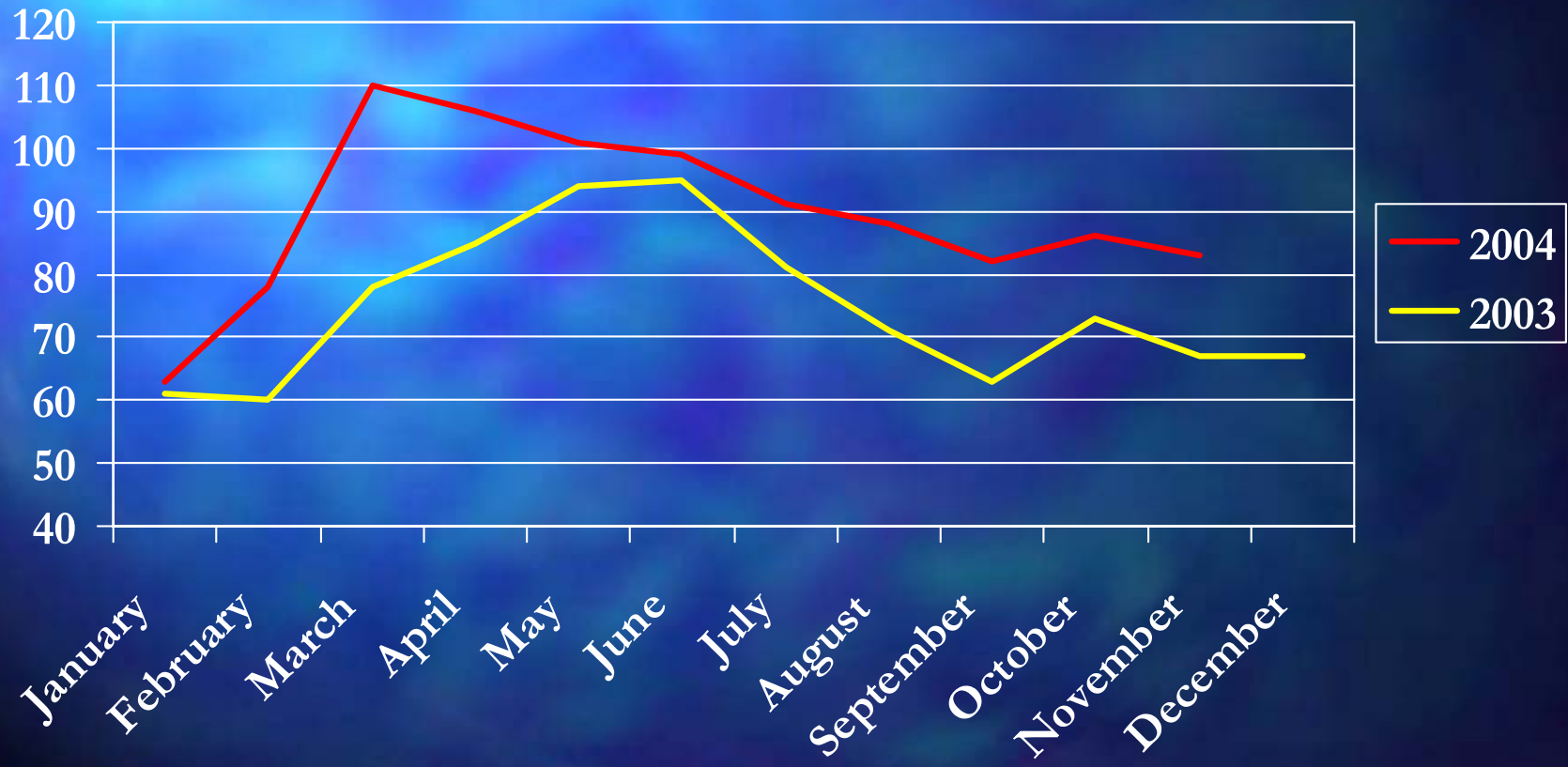


Prince George's County New Contracts (Condos/Co-ops)



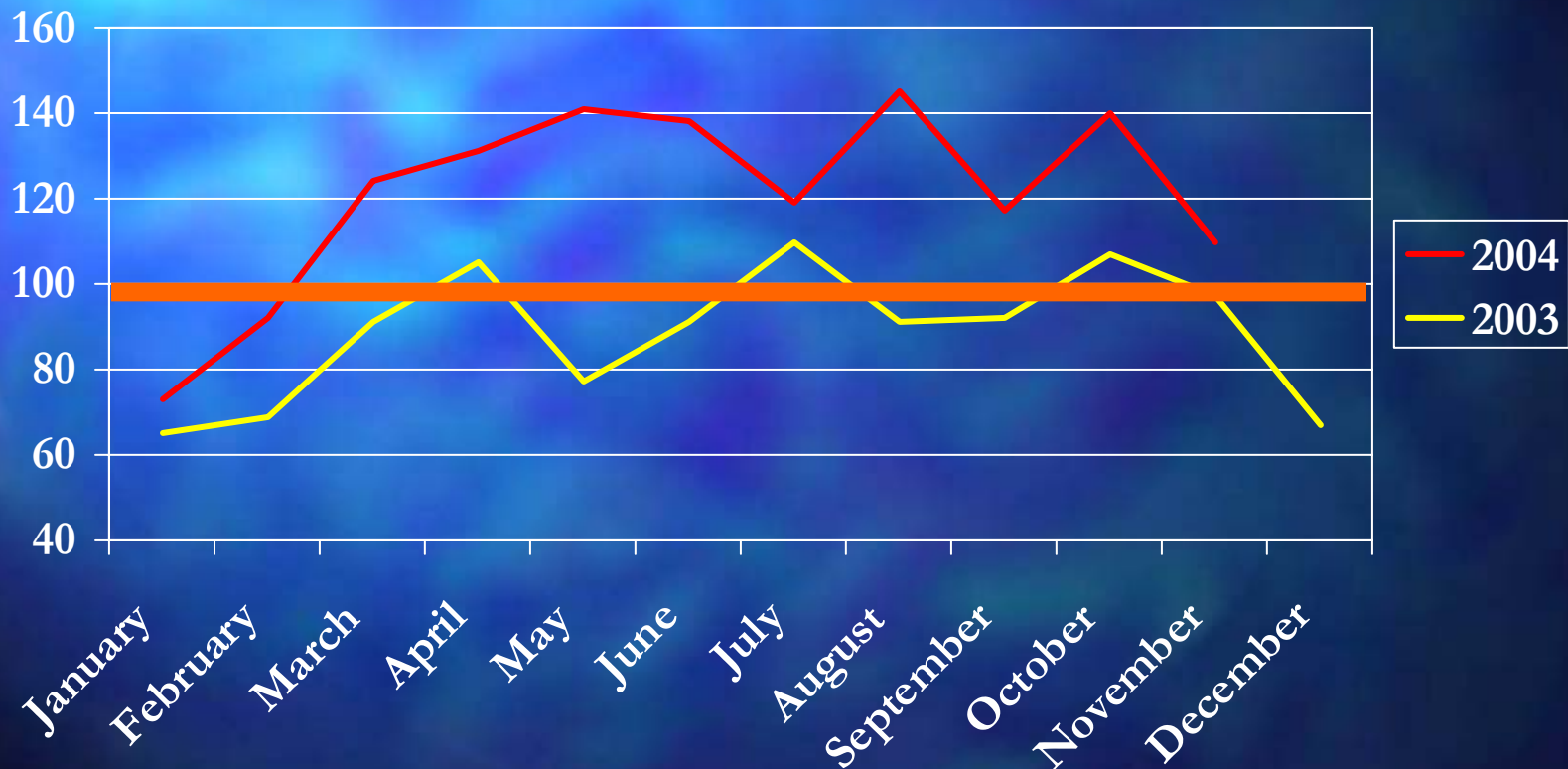
Prince George's County Absorption Rate (Single Family)

Absorption Rate is Percentage of New Contracts Versus Inventory

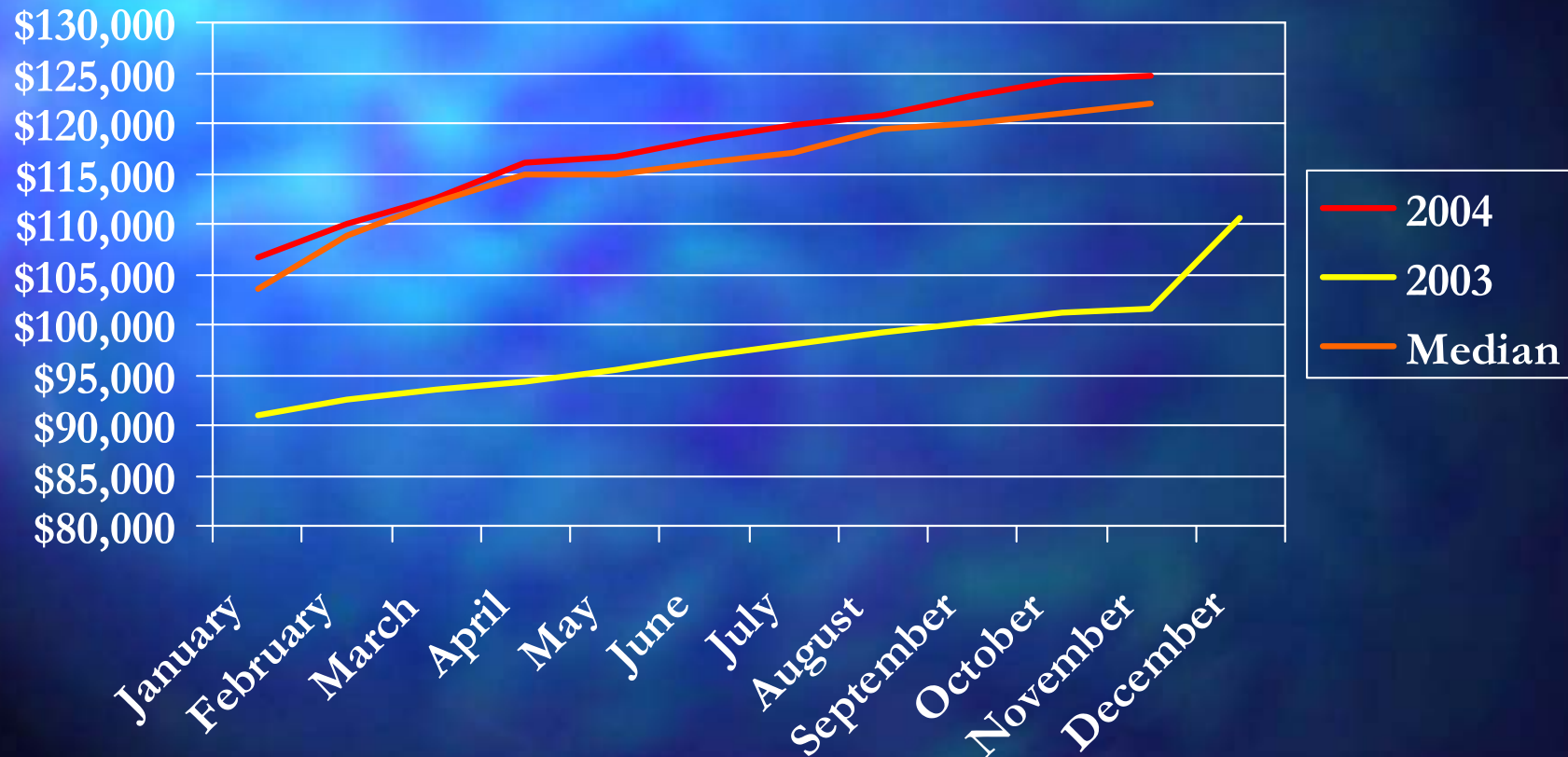


Prince George's County Absorption Rate (Condos/Co-ops)

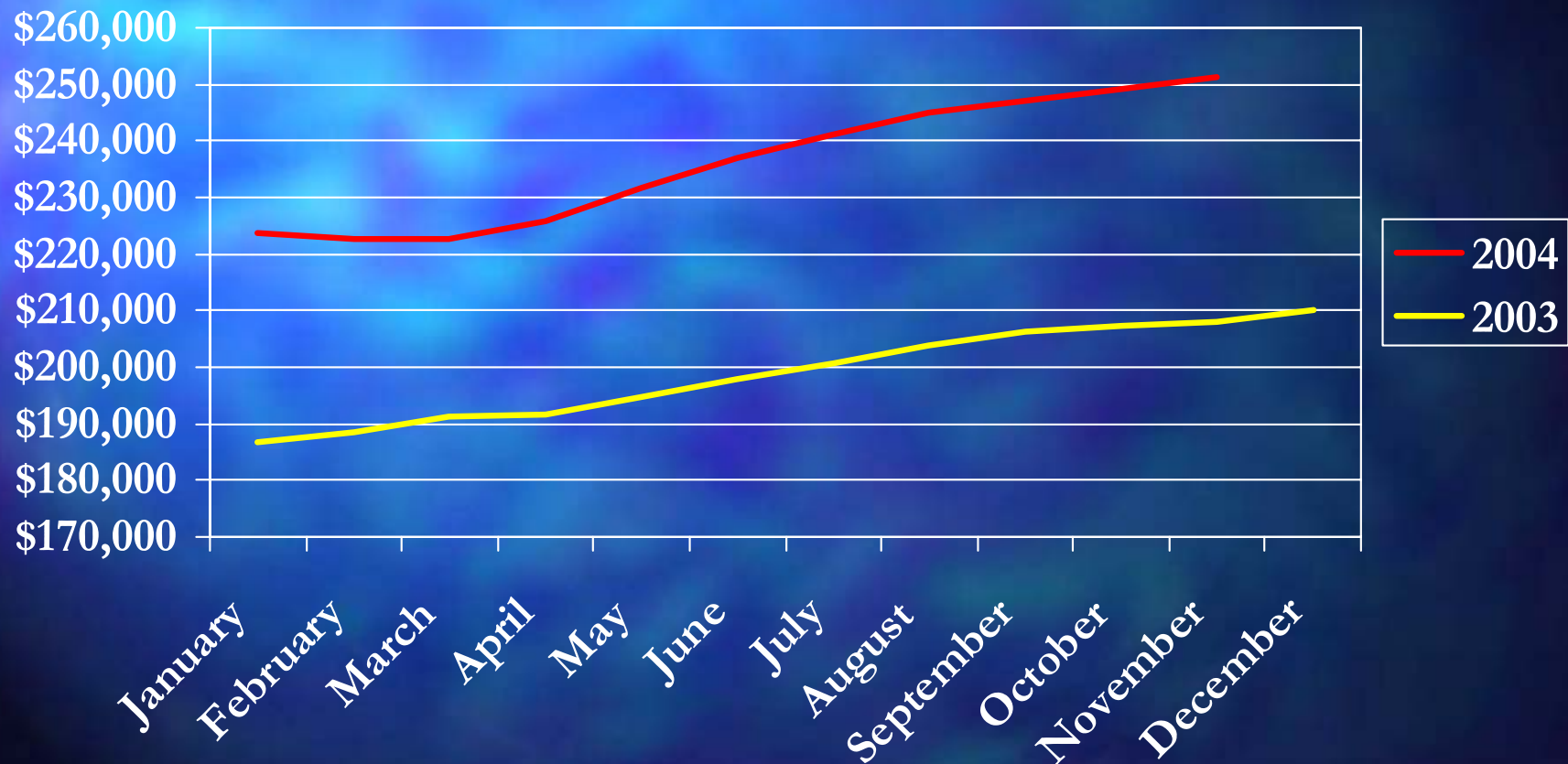
Absorption Rate is Percentage of New Contracts Versus Inventory



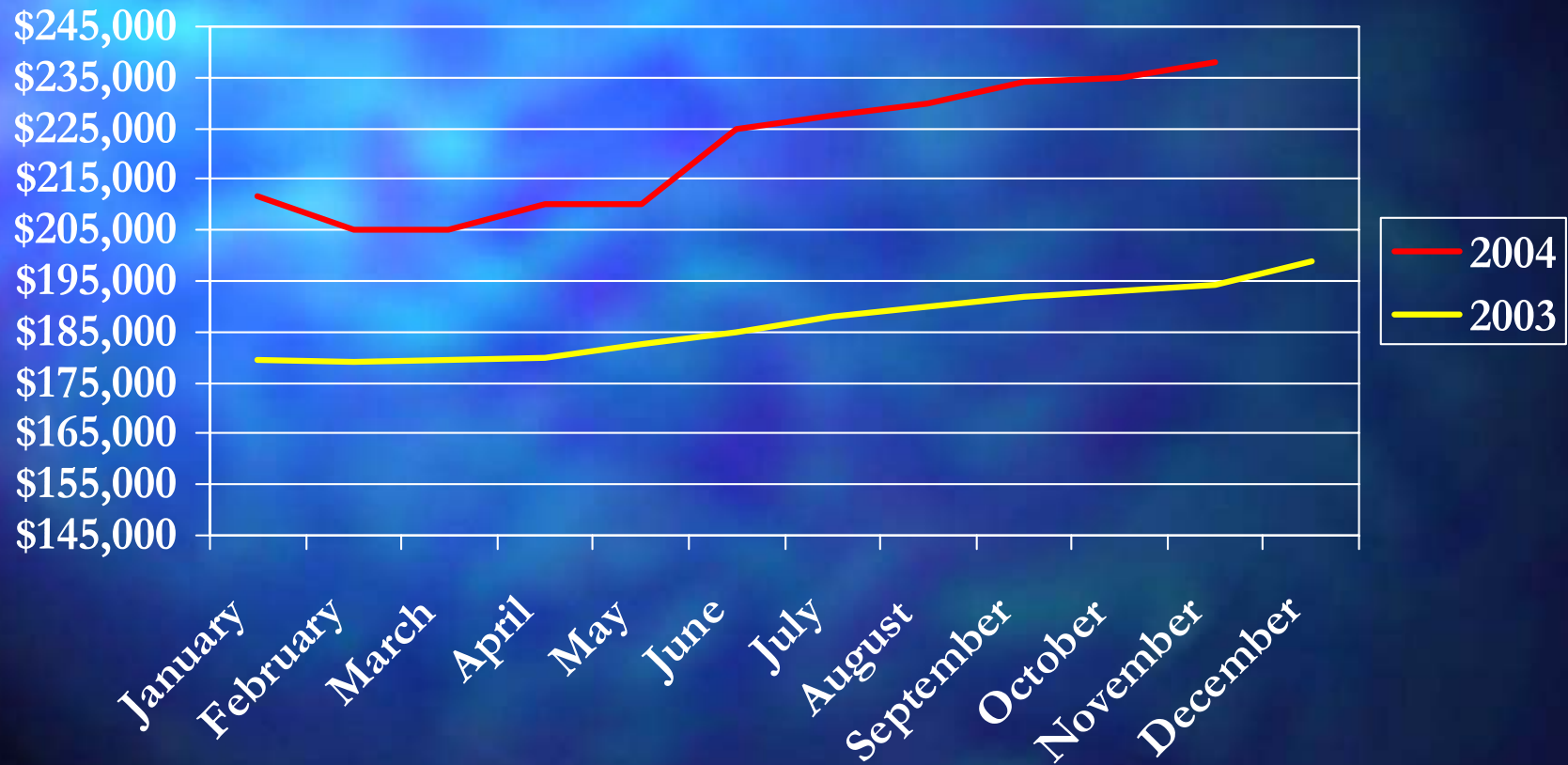
Prince George's County Average & Median Condo/Co-op Prices



Prince George's County Average Single Family Home Prices



Prince George's County Median Single Family Home Prices



Prince George's County Market Statistics

	November 2004	October 2004	November 2003	October 2003
Average Sold Price Single Family	\$251,181	\$249,175	\$210,251	\$210,000
Median Sold Price Single Family	\$238,000	\$235,000	\$195,000	\$194,175
Average Sold Price Condos	\$124,803	\$124,217	\$102,656	\$102,500
Median Sold Price Condos	\$122,000	\$121,000	\$100,000	\$100,000
Total Units Sold (Condos and Single Family)	1,338	1,420	1,178	1,287
Average Days on Market (Condos and Single Family)	33	36	43	40

2005 Forecast

- Prince George's County will remain the lower-price alternative
- More commercial development
- *A region on the move!*

For more information, please visit

www.PGCAR.com

Statistics available on the 6th of every month