

# PRINCE GEORGES COUNTY

## Residential Market Report

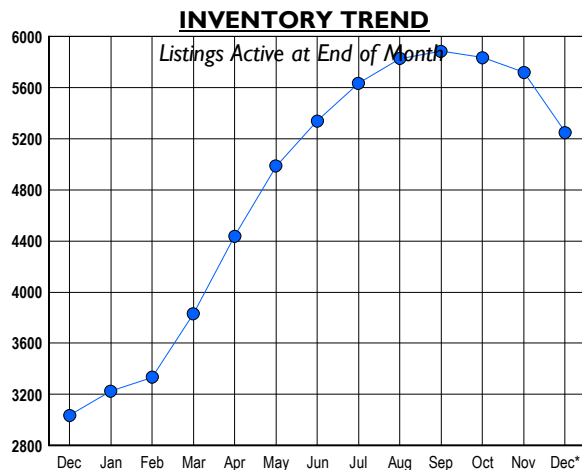
# HOUSING REPORT

## Single Family Homes

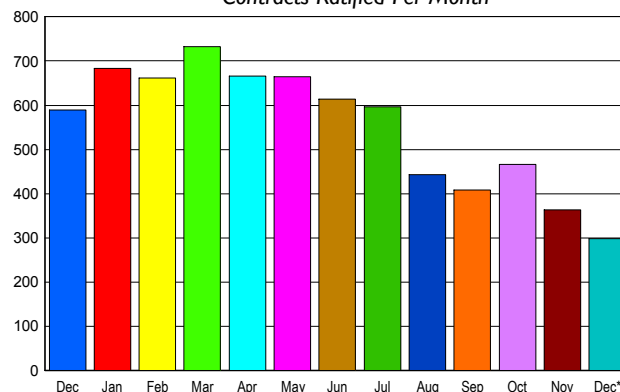
### December 2007

### LISTINGS

Prices Range	New This Month			Total Actives		
	2007	2006	% Change	2007	2006	% Change
0 - 149,999	5	2	150.0	33	7	371.4
150,000 - 199,999	21	19	10.5	108	30	260.0
200,000 - 299,999	266	181	47.0	1,158	391	196.2
300,000 - 399,999	386	356	8.4	2,064	1,236	67.0
400,000 - 499,999	145	147	-1.4	861	589	46.2
500,000 - 599,999	59	76	-22.4	495	374	32.4
600,000 - 699,999	33	41	-19.5	261	214	22.0
700,000 - 799,999	23	19	21.1	117	79	48.1
800,000 - 899,999	7	5	40.0	55	48	14.6
900,000 - 999,999	8	7	14.3	41	18	127.8
1,000,000 - 1,249,999	0	3	-100.0	24	22	9.1
1,250,000 - 1,499,999	2	0	200.0	11	16	-31.3
1,500,000 +	1	2	-50.0	20	12	66.7
<b>TOTALS</b>	<b>956</b>	<b>858</b>	<b>11.4</b>	<b>5248</b>	<b>3036</b>	<b>72.9</b>



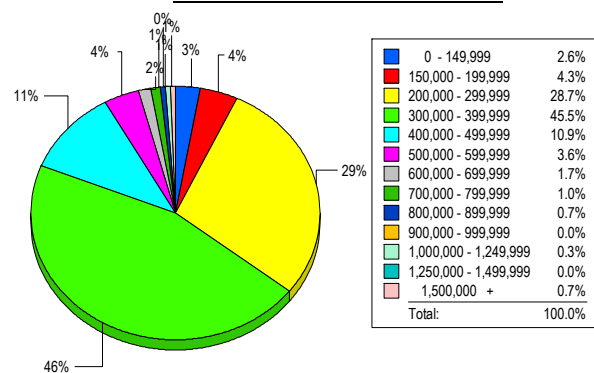
**SALES TREND**  
Contracts Ratified Per Month



### CONTRACTS

Price Range	New This Month			Year-To-Date		
	2007	2006	% Change	2007	2006	% Change
0 - 149,999	4	4	0.0	52	69	-24.6
150,000 - 199,999	17	14	21.4	173	295	-41.4
200,000 - 299,999	103	153	-32.7	1,659	2,729	-39.2
300,000 - 399,999	117	250	-53.2	2,672	4,768	-44.0
400,000 - 499,999	39	99	-60.6	848	1,527	-44.5
500,000 - 599,999	14	35	-60.0	330	705	-53.2
600,000 - 699,999	2	16	-87.5	114	346	-67.1
700,000 - 799,999	0	11	-100.0	42	123	-65.9
800,000 - 899,999	0	6	-100.0	23	45	-48.9
900,000 - 999,999	1	0	100.0	13	18	-27.8
1,000,000 - 1,249,999	0	0	0.0	13	12	8.3
1,250,000 - 1,499,999	1	0	100.0	7	9	-22.2
1,500,000 +	0	1	-100.0	5	8	-37.5
<b>TOTALS</b>	<b>298</b>	<b>589</b>	<b>-49.4</b>	<b>5951</b>	<b>10654</b>	<b>-44.1</b>

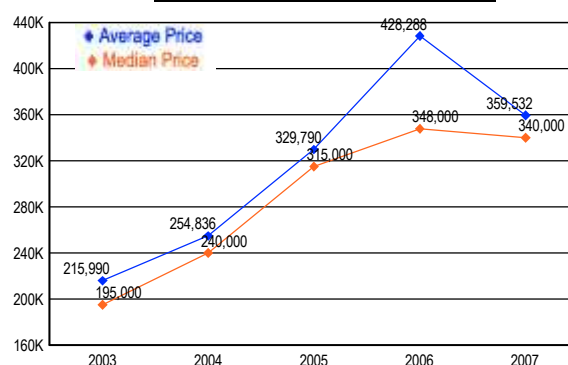
**MARKET BY PRICE RANGE**



### SETTLEMENTS

Price Range	New This Month			Year-to-Date		
	2007	2006	% Change	2007	2006	% Change
0 - 149,999	8	1	700.0	61	66	-7.6
150,000 - 199,999	13	12	8.3	161	298	-46.0
200,000 - 299,999	87	171	-49.1	1,601	2,661	-39.8
300,000 - 399,999	138	282	-51.1	2,745	4,813	-43.0
400,000 - 499,999	33	110	-70.0	890	1,603	-44.5
500,000 - 599,999	11	44	-75.0	348	712	-51.1
600,000 - 699,999	5	21	-76.2	125	352	-64.5
700,000 - 799,999	3	14	-78.6	42	132	-68.2
800,000 - 899,999	2	3	-33.3	36	45	-20.0
900,000 - 999,999	0	1	-100.0	8	19	-57.9
1,000,000 - 1,249,999	1	0	100.0	15	17	-11.8
1,250,000 - 1,499,999	0	1	-100.0	5	8	-37.5
1,500,000 +	2	2	0.0	7	6	16.7
<b>TOTALS</b>	<b>303</b>	<b>662</b>	<b>-54.2</b>	<b>6044</b>	<b>10732</b>	<b>-43.7</b>

**AVERAGE & MEDIAN PRICE**



DATA SOURCE: Metropolitan Regional Information Systems, Inc. (MRIS)

NOTES: Properties not listed through this Multiple Listing Service are not reflected. The term "sales" represents ratified purchase contracts. Current year information is preliminary and subject to revision. Current year-to-date contract information may not equal the sum of the monthly contract totals reported in