

# PRINCE GEORGES COUNTY

## Residential Market Report

# HOUSING REPORT

## Single Family Homes

### January 2008

### LISTINGS

Prices Range	New This Month			Total Actives		
	2008	2007	% Change	2008	2007	% Change
0 - 149,999	15	6	150.0	35	3	1,066.7
150,000 - 199,999	52	17	205.9	139	18	672.2
200,000 - 299,999	426	279	52.7	1,310	437	199.8
300,000 - 399,999	596	551	8.2	2,145	1,276	68.1
400,000 - 499,999	221	266	-16.9	875	619	41.4
500,000 - 599,999	122	146	-16.4	493	426	15.7
600,000 - 699,999	64	81	-21.0	283	236	19.9
700,000 - 799,999	35	37	-5.4	124	92	34.8
800,000 - 899,999	9	15	-40.0	62	51	21.6
900,000 - 999,999	16	6	166.7	38	20	90.0
1,000,000 - 1,249,999	8	4	100.0	25	22	13.6
1,250,000 - 1,499,999	4	4	0.0	12	15	-20.0
1,500,000 +	1	2	-50.0	19	11	72.7
<b>TOTALS</b>	<b>1569</b>	<b>1414</b>	<b>11.0</b>	<b>5560</b>	<b>3226</b>	<b>72.3</b>

### CONTRACTS

Price Range	New This Month			Year-To-Date		
	2008	2007	% Change	2008	2007	% Change
0 - 149,999	9	2	350.0	9	2	350.0
150,000 - 199,999	25	19	31.6	25	19	31.6
200,000 - 299,999	143	180	-20.6	143	180	-20.6
300,000 - 399,999	118	286	-58.7	118	286	-58.7
400,000 - 499,999	43	125	-65.6	43	125	-65.6
500,000 - 599,999	15	42	-64.3	15	42	-64.3
600,000 - 699,999	6	16	-62.5	6	16	-62.5
700,000 - 799,999	1	8	-87.5	1	8	-87.5
800,000 - 899,999	0	2	-100.0	0	2	-100.0
900,000 - 999,999	0	1	-100.0	0	1	-100.0
1,000,000 - 1,249,999	1	3	-66.7	1	3	-66.7
1,250,000 - 1,499,999	0	0	0.0	0	0	0.0
1,500,000 +	0	0	0.0	0	0	0.0
<b>TOTALS</b>	<b>361</b>	<b>684</b>	<b>-47.2</b>	<b>361</b>	<b>684</b>	<b>-47.2</b>

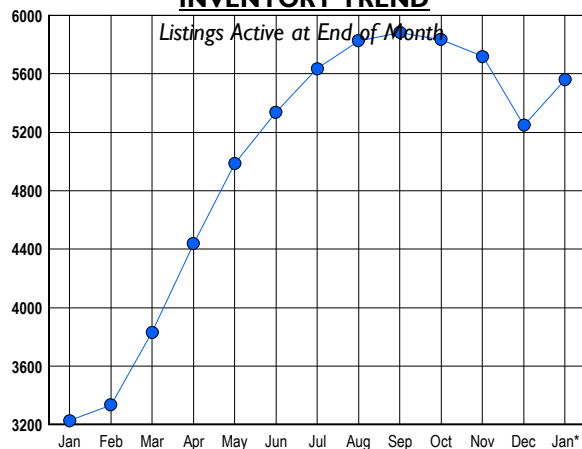
### SETTLEMENTS

Price Range	New This Month			Year-to-Date		
	2008	2007	% Change	2008	2007	% Change
0 - 149,999	2	7	-71.4	2	7	-71.4
150,000 - 199,999	11	8	37.5	11	8	37.5
200,000 - 299,999	70	104	-32.7	70	104	-32.7
300,000 - 399,999	84	222	-62.2	84	222	-62.2
400,000 - 499,999	16	84	-81.0	16	84	-81.0
500,000 - 599,999	10	24	-58.3	10	24	-58.3
600,000 - 699,999	6	15	-60.0	6	15	-60.0
700,000 - 799,999	0	4	-100.0	0	4	-100.0
800,000 - 899,999	1	4	-75.0	1	4	-75.0
900,000 - 999,999	1	0	100.0	1	0	100.0
1,000,000 - 1,249,999	0	2	-100.0	0	2	-100.0
1,250,000 - 1,499,999	0	1	-100.0	0	1	-100.0
1,500,000 +	0	0	0.0	0	0	0.0
<b>TOTALS</b>	<b>201</b>	<b>475</b>	<b>-57.7</b>	<b>201</b>	<b>475</b>	<b>-57.7</b>

DATA SOURCE: Metropolitan Regional Information Systems, Inc. (MRIS)

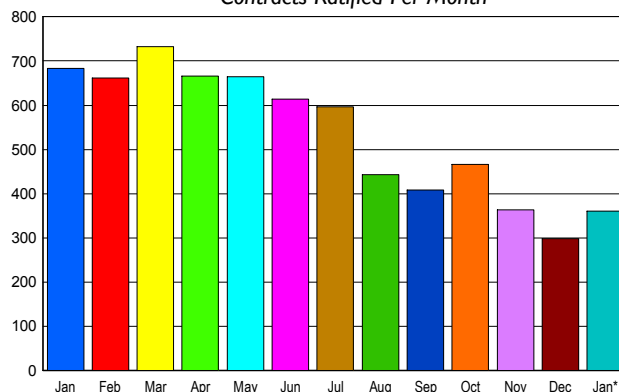
NOTES: Properties not listed through this Multiple Listing Service are not reflected. The term "sales" represents ratified purchase contracts. Current year information is preliminary and subject to revision. Current year- to- date contract information may not equal the sum of the monthly contract totals reported in

### INVENTORY TREND

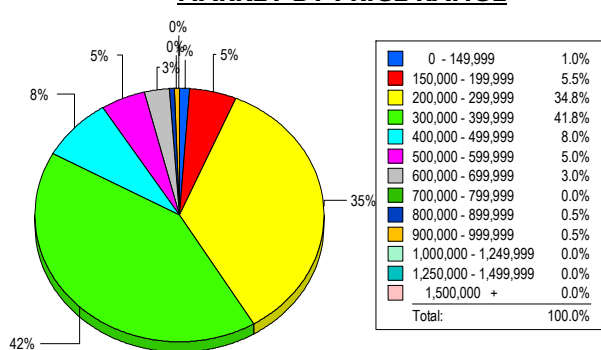


### SALES TREND

Contracts Ratified Per Month



### MARKET BY PRICE RANGE



### AVERAGE & MEDIAN PRICE

