

# PRINCE GEORGES COUNTY

## Residential Market Report

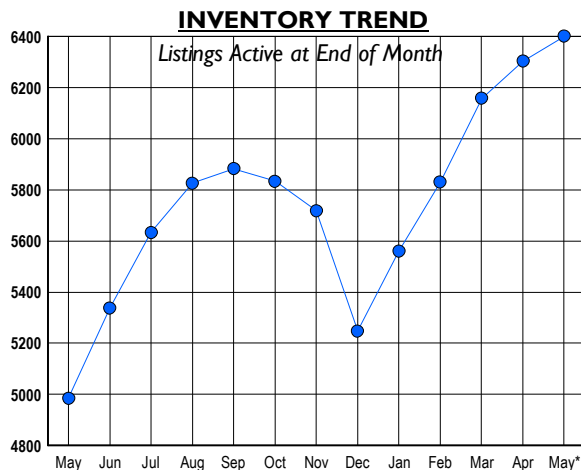
# HOUSING REPORT

## Single Family Homes

### May 2008

### LISTINGS

Prices Range	New This Month			Total Actives		
	2008	2007	% Change	2008	2007	% Change
0 - 149,999	19	13	46.2	85	16	431.3
150,000 - 199,999	77	27	185.2	298	28	964.3
200,000 - 299,999	488	286	70.6	1,954	596	227.9
300,000 - 399,999	490	827	-40.7	2,199	2,023	8.7
400,000 - 499,999	209	337	-38.0	874	1,012	-13.6
500,000 - 599,999	95	194	-51.0	476	612	-22.2
600,000 - 699,999	34	115	-70.4	241	360	-33.1
700,000 - 799,999	18	43	-58.1	112	159	-29.6
800,000 - 899,999	13	15	-13.3	57	68	-16.2
900,000 - 999,999	6	5	20.0	36	33	9.1
1,000,000 - 1,249,999	5	13	-61.5	24	41	-41.5
1,250,000 - 1,499,999	4	1	300.0	14	18	-22.2
1,500,000 +	6	4	50.0	30	19	57.9
<b>TOTALS</b>	<b>1464</b>	<b>1880</b>	<b>-22.1</b>	<b>6400</b>	<b>4985</b>	<b>28.4</b>

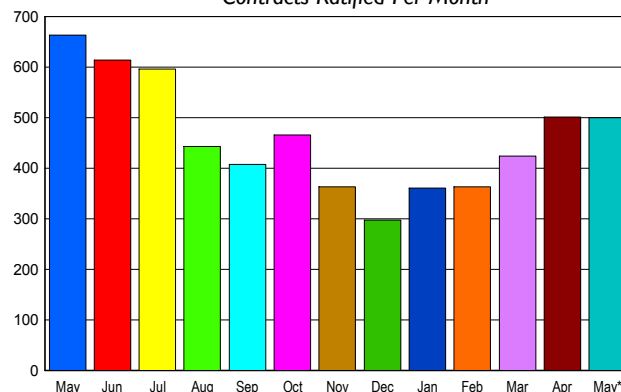


### CONTRACTS

Price Range	New This Month			Year-To-Date		
	2008	2007	% Change	2008	2007	% Change
0 - 149,999	8	6	33.3	40	20	100.0
150,000 - 199,999	50	28	78.6	135	88	53.4
200,000 - 299,999	221	199	11.1	788	818	-3.7
300,000 - 399,999	138	277	-50.2	612	1,424	-57.0
400,000 - 499,999	54	94	-42.6	188	486	-61.3
500,000 - 599,999	21	33	-36.4	96	196	-51.0
600,000 - 699,999	4	14	-71.4	24	73	-67.1
700,000 - 799,999	2	3	-33.3	6	24	-75.0
800,000 - 899,999	2	6	-66.7	6	17	-64.7
900,000 - 999,999	0	2	-100.0	1	6	-83.3
1,000,000 - 1,249,999	0	0	0.0	3	6	-50.0
1,250,000 - 1,499,999	1	1	0.0	1	2	-50.0
1,500,000 +	0	1	-100.0	0	3	-100.0
<b>TOTALS</b>	<b>501</b>	<b>664</b>	<b>-24.5</b>	<b>1900</b>	<b>3163</b>	<b>-39.9</b>

### SALES TREND

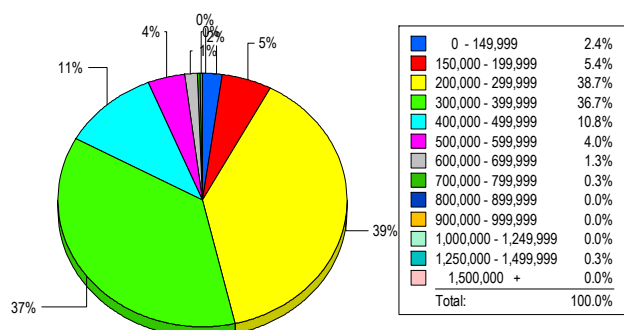
Contracts Ratified Per Month



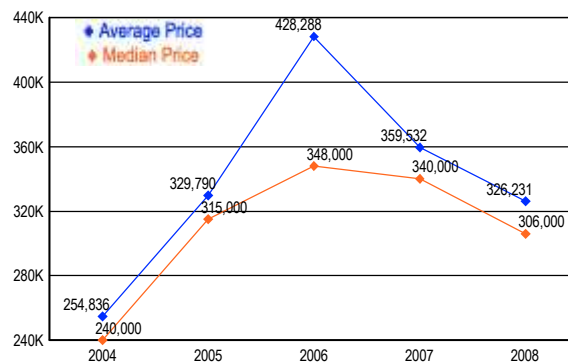
### SETTLEMENTS

Price Range	New This Month			Year-to-Date		
	2008	2007	% Change	2008	2007	% Change
0 - 149,999	7	3	133.3	30	20	50.0
150,000 - 199,999	16	17	-5.9	73	72	1.4
200,000 - 299,999	115	138	-16.7	517	694	-25.5
300,000 - 399,999	109	242	-55.0	519	1,332	-61.0
400,000 - 499,999	32	87	-63.2	136	460	-70.4
500,000 - 599,999	12	30	-60.0	67	171	-60.8
600,000 - 699,999	4	8	-50.0	18	69	-73.9
700,000 - 799,999	1	2	-50.0	7	19	-63.2
800,000 - 899,999	0	2	-100.0	5	19	-73.7
900,000 - 999,999	0	1	-100.0	3	3	0.0
1,000,000 - 1,249,999	0	1	-100.0	2	10	-80.0
1,250,000 - 1,499,999	1	0	100.0	1	2	-50.0
1,500,000 +	0	1	-100.0	0	3	-100.0
<b>TOTALS</b>	<b>297</b>	<b>532</b>	<b>-44.2</b>	<b>1378</b>	<b>2874</b>	<b>-52.1</b>

### MARKET BY PRICE RANGE



### AVERAGE & MEDIAN PRICE



DATA SOURCE: Metropolitan Regional Information Systems, Inc. (MRIS)

NOTES: Properties not listed through this Multiple Listing Service are not reflected. The term "sales" represents ratified purchase contracts. Current year information is preliminary and subject to revision. Current year-to-date contract information may not equal the sum of the monthly contract totals reported in