

# PRINCE GEORGES COUNTY

## Residential Market Report

# HOUSING REPORT

## Single Family Homes

### December 2008

### LISTINGS

Prices Range	New This Month			Total Actives		
	2008	2007	% Change	2008	2007	% Change
0 - 149,999	76	5	1,420.0	370	33	1,021.2
150,000 - 199,999	159	21	657.1	718	108	564.8
200,000 - 299,999	427	266	60.5	2,195	1,158	89.6
300,000 - 399,999	200	386	-48.2	1,272	2,064	-38.4
400,000 - 499,999	62	145	-57.2	513	861	-40.4
500,000 - 599,999	45	59	-23.7	244	495	-50.7
600,000 - 699,999	10	33	-69.7	114	261	-56.3
700,000 - 799,999	8	23	-65.2	65	117	-44.4
800,000 - 899,999	5	7	-28.6	47	55	-14.5
900,000 - 999,999	4	8	-50.0	28	41	-31.7
1,000,000 - 1,249,999	1	0	100.0	6	24	-75.0
1,250,000 - 1,499,999	0	2	-100.0	16	11	45.5
1,500,000 +	3	1	200.0	45	20	125.0
<b>TOTALS</b>	<b>1000</b>	<b>956</b>	<b>4.6</b>	<b>5633</b>	<b>5248</b>	<b>7.3</b>

### CONTRACTS

Price Range	New This Month			Year-To-Date		
	2008	2007	% Change	2008	2007	% Change
0 - 149,999	51	4	1,175.0	214	52	311.5
150,000 - 199,999	95	17	458.8	500	173	189.0
200,000 - 299,999	197	103	91.3	2,035	1,659	22.7
300,000 - 399,999	88	117	-24.8	1,264	2,672	-52.7
400,000 - 499,999	31	39	-20.5	456	848	-46.2
500,000 - 599,999	17	14	21.4	167	330	-49.4
600,000 - 699,999	4	2	100.0	60	114	-47.4
700,000 - 799,999	3	0	300.0	22	42	-47.6
800,000 - 899,999	1	0	100.0	10	23	-56.5
900,000 - 999,999	0	1	-100.0	6	13	-53.8
1,000,000 - 1,249,999	0	0	0.0	6	13	-53.8
1,250,000 - 1,499,999	0	1	-100.0	2	7	-71.4
1,500,000 +	0	0	0.0	0	5	-100.0
<b>TOTALS</b>	<b>487</b>	<b>298</b>	<b>63.4</b>	<b>4742</b>	<b>5951</b>	<b>-20.3</b>

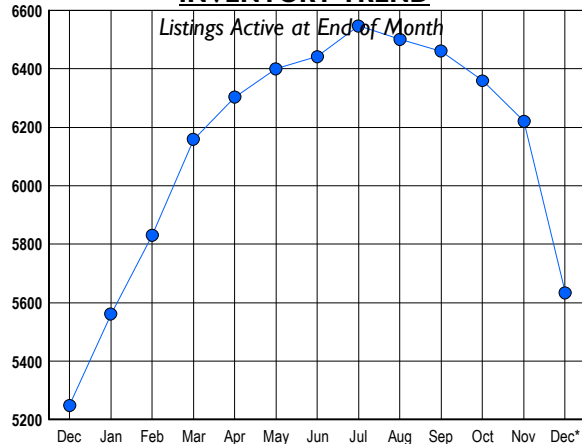
### SETTLEMENTS

Price Range	New This Month			Year-to-Date		
	2008	2007	% Change	2008	2007	% Change
0 - 149,999	33	8	312.5	159	61	160.7
150,000 - 199,999	45	13	246.2	322	161	100.0
200,000 - 299,999	140	87	60.9	1,776	1,601	10.9
300,000 - 399,999	55	138	-60.1	1,222	2,745	-55.5
400,000 - 499,999	25	33	-24.2	413	890	-53.6
500,000 - 599,999	9	11	-18.2	141	348	-59.5
600,000 - 699,999	3	5	-40.0	56	125	-55.2
700,000 - 799,999	2	3	-33.3	21	42	-50.0
800,000 - 899,999	0	2	-100.0	12	36	-66.7
900,000 - 999,999	0	0	0.0	5	8	-37.5
1,000,000 - 1,249,999	0	1	-100.0	6	15	-60.0
1,250,000 - 1,499,999	0	0	0.0	1	5	-80.0
1,500,000 +	0	2	-100.0	0	7	-100.0
<b>TOTALS</b>	<b>312</b>	<b>303</b>	<b>3.0</b>	<b>4134</b>	<b>6044</b>	<b>-31.6</b>

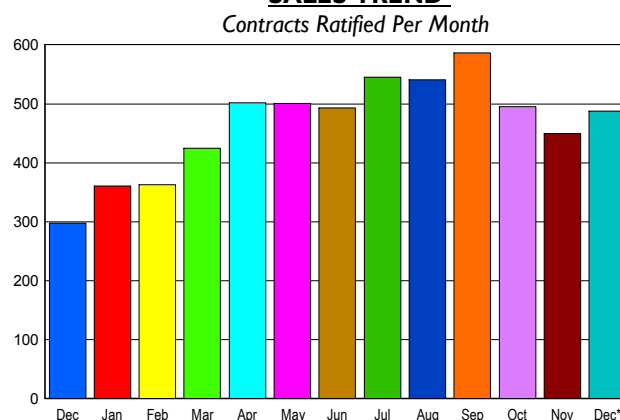
DATA SOURCE: Metropolitan Regional Information Systems, Inc. (MRIS)

NOTES: Properties not listed through this Multiple Listing Service are not reflected. The term "sales" represents ratified purchase contracts. Current year information is preliminary and subject to revision. Current year-to-date contract information may not equal the sum of the monthly contract totals reported in

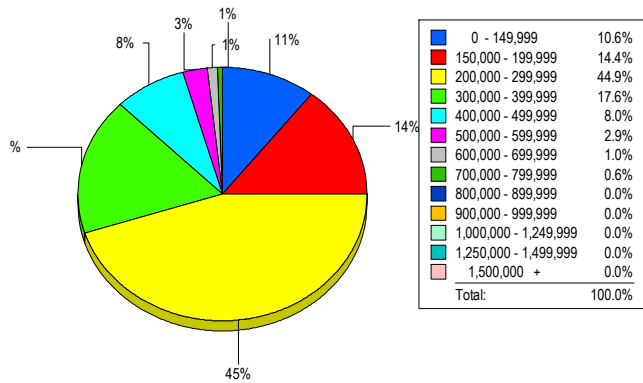
### INVENTORY TREND



### SALES TREND



### MARKET BY PRICE RANGE



### AVERAGE & MEDIAN PRICE

