

# PRINCE GEORGES COUNTY

## Residential Market Report

# HOUSING REPORT

## CONDO & COOPS

June 2009

### LISTINGS

Price Range	New This Month			Total Actives		
	2009	2008	% Change	2009	2008	% Change
0 - 149,999	62	28	121.4	320	151	111.9
150,000 - 199,999	44	54	-18.5	206	263	-21.7
200,000 - 299,999	22	65	-66.2	171	315	-45.7
300,000 - 399,999	2	4	-50.0	7	27	-74.1
400,000 - 499,999	0	0	0.0	4	2	100.0
500,000 - 599,999	0	0	0.0	0	3	-100.0
600,000 - 699,999	0	0	0.0	0	0	0.0
700,000 - 799,999	0	0	0.0	0	0	0.0
800,000 - 899,999	0	0	0.0	0	0	0.0
900,000 - 999,999	0	0	0.0	0	0	0.0
1,000,000 - 1,249,999	0	0	0.0	1	0	0.0
1,250,000 - 1,499,999	0	0	0.0	0	0	0.0
1,500,000 +	0	0	0.0	0	0	0.0
<b>TOTALS</b>	<b>130</b>	<b>151</b>	<b>-13.9</b>	<b>709</b>	<b>761</b>	<b>-6.8</b>

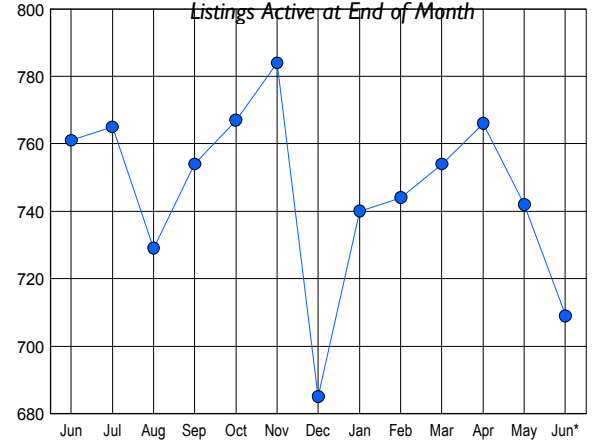
### CONTRACTS

Price Range	New This Month			Year-To-Date		
	2009	2008	% Change	2009	2008	% Change
0 - 149,999	42	22	90.9	134	72	86.1
150,000 - 199,999	26	14	85.7	83	131	-36.6
200,000 - 299,999	13	21	-38.1	74	169	-56.2
300,000 - 399,999	0	1	-100.0	4	7	-42.9
400,000 - 499,999	0	0	0.0	0	0	0.0
500,000 - 599,999	0	0	0.0	0	0	0.0
600,000 - 699,999	0	0	0.0	0	0	0.0
700,000 - 799,999	0	0	0.0	0	0	0.0
800,000 - 899,999	0	0	0.0	0	0	0.0
900,000 - 999,999	0	0	0.0	0	0	0.0
1,000,000 - 1,249,999	0	0	0.0	0	0	0.0
1,250,000 - 1,499,999	0	0	0.0	0	0	0.0
1,500,000 +	0	0	0.0	0	0	0.0
<b>TOTALS</b>	<b>81</b>	<b>58</b>	<b>39.7</b>	<b>295</b>	<b>379</b>	<b>-22.2</b>

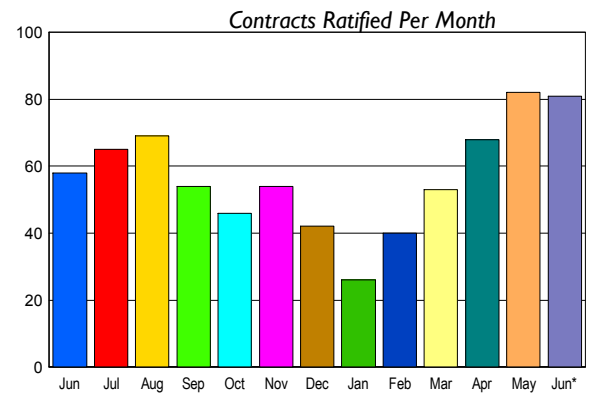
### SETTLEMENTS

Price Range	New This Month			Year-To-Date		
	2009	2008	% Change	2009	2008	% Change
0 - 149,999	15	7	114.3	82	49	67.3
150,000 - 199,999	9	16	-43.8	47	112	-58.0
200,000 - 299,999	16	26	-38.5	58	152	-61.8
300,000 - 399,999	1	2	-50.0	2	7	-71.4
400,000 - 499,999	0	0	0.0	0	2	-100.0
500,000 - 599,999	0	0	0.0	0	0	0.0
600,000 - 699,999	0	0	0.0	0	0	0.0
700,000 - 799,999	0	0	0.0	0	0	0.0
800,000 - 899,999	0	0	0.0	0	0	0.0
900,000 - 999,999	0	0	0.0	0	0	0.0
1,000,000 - 1,249,999	0	0	0.0	0	0	0.0
1,250,000 - 1,499,999	0	0	0.0	0	0	0.0
1,500,000 +	0	0	0.0	0	0	0.0
<b>TOTALS</b>	<b>41</b>	<b>51</b>	<b>-19.6</b>	<b>189</b>	<b>322</b>	<b>-41.3</b>

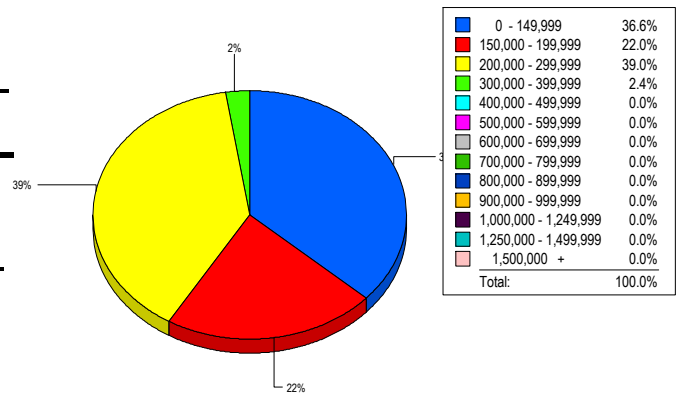
### INVENTORY TREND



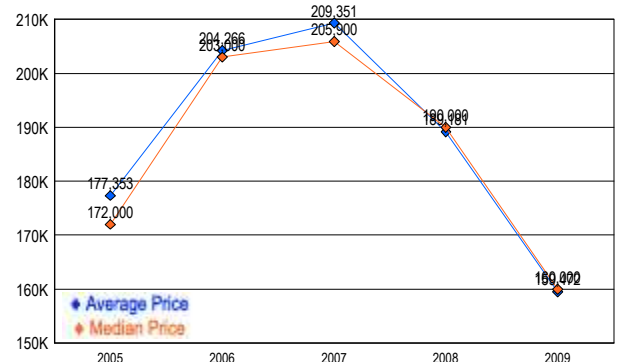
### SALES TREND



### MARKET BY PRICE RANGE



### AVERAGE & MEDIAN PRICE



DATA SOURCE: Metropolitan Regional Information Systems, Inc. (MRIS)

NOTES: Properties not listed through this Multiple Listing Service are not reflected. The term "sales" represents ratified purchase contracts. Current year information is preliminary and subject to revision. Current year-to-date contract information may not equal the sum of the monthly contract totals reported in