

PRINCE GEORGES COUNTY

Residential Market Report

HOUSING REPORT

CONDO & COOPS

July 2009

LISTINGS

| Price Range | New This Month | | | Total Actives | | |
|-----------------------|----------------|------------|--------------|---------------|------------|--------------|
| | 2009 | 2008 | % Change | 2009 | 2008 | % Change |
| 0 - 149,999 | 84 | 42 | 100.0 | 340 | 169 | 101.2 |
| 150,000 - 199,999 | 49 | 57 | -14.0 | 208 | 240 | -13.3 |
| 200,000 - 299,999 | 32 | 92 | -65.2 | 128 | 326 | -60.7 |
| 300,000 - 399,999 | 0 | 5 | -100.0 | 6 | 24 | -75.0 |
| 400,000 - 499,999 | 0 | 1 | -100.0 | 4 | 3 | 33.3 |
| 500,000 - 599,999 | 0 | 1 | -100.0 | 0 | 3 | -100.0 |
| 600,000 - 699,999 | 0 | 0 | 0.0 | 0 | 0 | 0.0 |
| 700,000 - 799,999 | 0 | 0 | 0.0 | 0 | 0 | 0.0 |
| 800,000 - 899,999 | 0 | 0 | 0.0 | 0 | 0 | 0.0 |
| 900,000 - 999,999 | 0 | 0 | 0.0 | 0 | 0 | 0.0 |
| 1,000,000 - 1,249,999 | 0 | 0 | 0.0 | 1 | 0 | 0.0 |
| 1,250,000 - 1,499,999 | 0 | 0 | 0.0 | 0 | 0 | 0.0 |
| 1,500,000 + | 0 | 0 | 0.0 | 0 | 0 | 0.0 |
| TOTALS | 165 | 198 | -16.7 | 687 | 765 | -10.2 |

CONTRACTS

| Price Range | New This Month | | | Year-To-Date | | |
|-----------------------|----------------|-----------|-------------|--------------|------------|--------------|
| | 2009 | 2008 | % Change | 2009 | 2008 | % Change |
| 0 - 149,999 | 40 | 19 | 110.5 | 166 | 90 | 84.4 |
| 150,000 - 199,999 | 26 | 25 | 4.0 | 102 | 157 | -35.0 |
| 200,000 - 299,999 | 20 | 18 | 11.1 | 90 | 187 | -51.9 |
| 300,000 - 399,999 | 0 | 3 | -100.0 | 2 | 10 | -80.0 |
| 400,000 - 499,999 | 0 | 0 | 0.0 | 0 | 0 | 0.0 |
| 500,000 - 599,999 | 0 | 0 | 0.0 | 0 | 0 | 0.0 |
| 600,000 - 699,999 | 0 | 0 | 0.0 | 0 | 0 | 0.0 |
| 700,000 - 799,999 | 0 | 0 | 0.0 | 0 | 0 | 0.0 |
| 800,000 - 899,999 | 0 | 0 | 0.0 | 0 | 0 | 0.0 |
| 900,000 - 999,999 | 0 | 0 | 0.0 | 0 | 0 | 0.0 |
| 1,000,000 - 1,249,999 | 0 | 0 | 0.0 | 0 | 0 | 0.0 |
| 1,250,000 - 1,499,999 | 0 | 0 | 0.0 | 0 | 0 | 0.0 |
| 1,500,000 + | 0 | 0 | 0.0 | 0 | 0 | 0.0 |
| TOTALS | 86 | 65 | 32.3 | 360 | 444 | -18.9 |

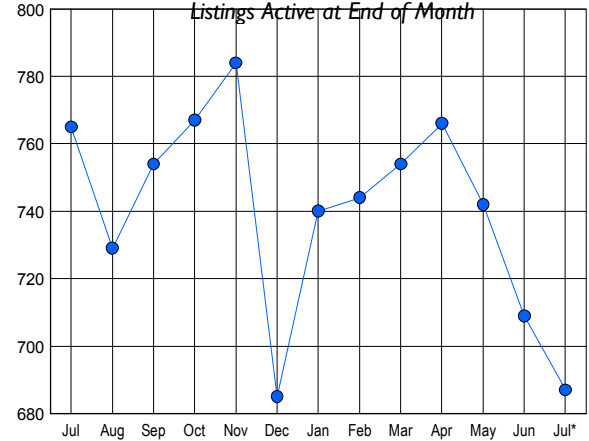
SETTLEMENTS

| Price Range | New This Month | | | Year-To-Date | | |
|-----------------------|----------------|-----------|-------------|--------------|------------|--------------|
| | 2009 | 2008 | % Change | 2009 | 2008 | % Change |
| 0 - 149,999 | 26 | 12 | 116.7 | 115 | 64 | 79.7 |
| 150,000 - 199,999 | 16 | 12 | 33.3 | 64 | 131 | -51.1 |
| 200,000 - 299,999 | 12 | 20 | -40.0 | 71 | 176 | -59.7 |
| 300,000 - 399,999 | 0 | 0 | 0.0 | 2 | 7 | -71.4 |
| 400,000 - 499,999 | 0 | 0 | 0.0 | 0 | 2 | -100.0 |
| 500,000 - 599,999 | 0 | 0 | 0.0 | 0 | 0 | 0.0 |
| 600,000 - 699,999 | 0 | 0 | 0.0 | 0 | 0 | 0.0 |
| 700,000 - 799,999 | 0 | 0 | 0.0 | 0 | 0 | 0.0 |
| 800,000 - 899,999 | 0 | 0 | 0.0 | 0 | 0 | 0.0 |
| 900,000 - 999,999 | 0 | 0 | 0.0 | 0 | 0 | 0.0 |
| 1,000,000 - 1,249,999 | 0 | 0 | 0.0 | 0 | 0 | 0.0 |
| 1,250,000 - 1,499,999 | 0 | 0 | 0.0 | 0 | 0 | 0.0 |
| 1,500,000 + | 0 | 0 | 0.0 | 0 | 0 | 0.0 |
| TOTALS | 54 | 44 | 22.7 | 252 | 380 | -33.7 |

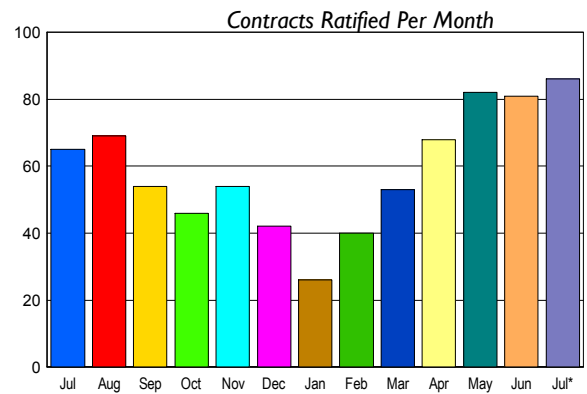
DATA SOURCE: Metropolitan Regional Information Systems, Inc. (MRIS)

NOTES: Properties not listed through this Multiple Listing Service are not reflected. The term "sales" represents ratified purchase contracts. Current year information is preliminary and subject to revision. Current year-to-date contract information may not equal the sum of the monthly contract totals reported in

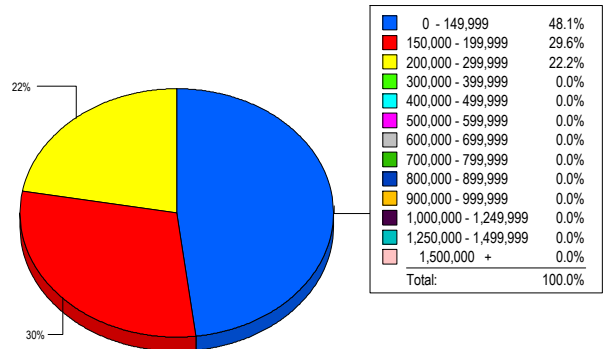
INVENTORY TREND



SALES TREND



MARKET BY PRICE RANGE



AVERAGE & MEDIAN PRICE

