

# PRINCE GEORGES COUNTY

## Residential Market Report

# HOUSING REPORT

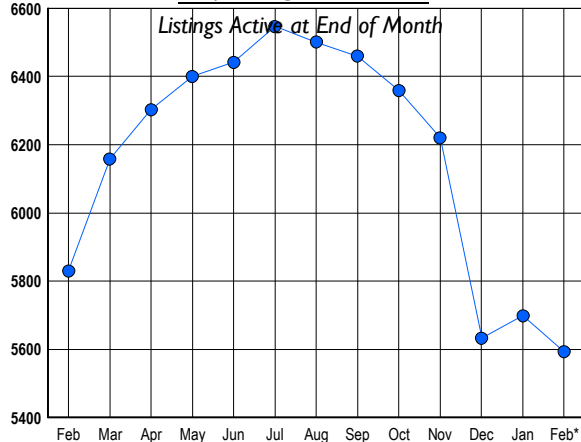
## Single Family Homes

### February 2009

### LISTINGS

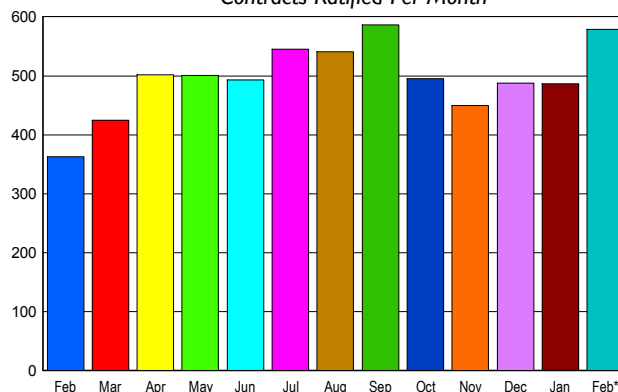
Prices Range	New This Month			Total Actives		
	2009	2008	% Change	2009	2008	% Change
0 - 149,999	115	14	721.4	529	48	1,002.1
150,000 - 199,999	185	37	400.0	876	168	421.4
200,000 - 299,999	445	410	8.5	2,070	1,512	36.9
300,000 - 399,999	235	532	-55.8	1,125	2,201	-48.9
400,000 - 499,999	89	176	-49.4	495	867	-42.9
500,000 - 599,999	42	96	-56.3	217	478	-54.6
600,000 - 699,999	22	45	-51.1	108	275	-60.7
700,000 - 799,999	5	23	-78.3	50	124	-59.7
800,000 - 899,999	2	6	-66.7	46	58	-20.7
900,000 - 999,999	4	8	-50.0	25	43	-41.9
1,000,000 - 1,249,999	1	5	-80.0	6	24	-75.0
1,250,000 - 1,499,999	1	2	-50.0	8	11	-27.3
1,500,000 +	1	5	-80.0	38	21	81.0
<b>TOTALS</b>	<b>1147</b>	<b>1359</b>	<b>-15.6</b>	<b>5593</b>	<b>5830</b>	<b>-4.1</b>

### INVENTORY TREND



### SALES TREND

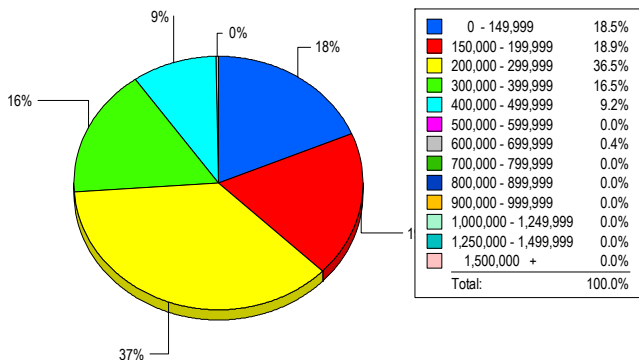
Contracts Ratified Per Month



### CONTRACTS

Price Range	New This Month			Year-To-Date		
	2009	2008	% Change	2009	2008	% Change
0 - 149,999	84	5	1,580.0	153	13	1,076.9
150,000 - 199,999	112	32	250.0	198	51	288.2
200,000 - 299,999	220	152	44.7	389	281	38.4
300,000 - 399,999	101	112	-9.8	171	219	-21.9
400,000 - 499,999	39	32	21.9	79	67	17.9
500,000 - 599,999	15	20	-25.0	25	35	-28.6
600,000 - 699,999	3	7	-57.1	6	12	-50.0
700,000 - 799,999	3	1	200.0	6	2	200.0
800,000 - 899,999	0	1	-100.0	0	1	-100.0
900,000 - 999,999	1	0	100.0	1	0	100.0
1,000,000 - 1,249,999	0	1	-100.0	0	2	-100.0
1,250,000 - 1,499,999	1	0	100.0	1	0	100.0
1,500,000 +	0	0	0.0	0	0	0.0
<b>TOTALS</b>	<b>579</b>	<b>363</b>	<b>59.5</b>	<b>1029</b>	<b>683</b>	<b>50.7</b>

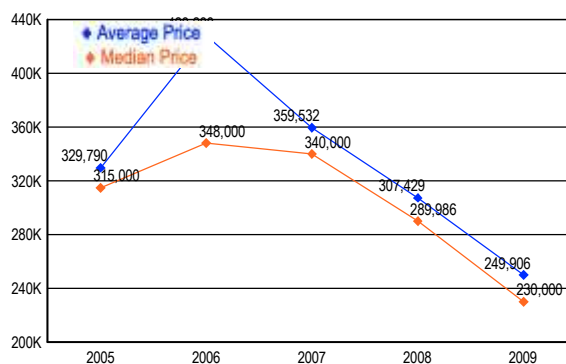
### MARKET BY PRICE RANGE



### SETTLEMENTS

Price Range	New This Month			Year-to-Date		
	2009	2008	% Change	2009	2008	% Change
0 - 149,999	46	6	666.7	77	8	862.5
150,000 - 199,999	47	9	422.2	92	21	338.1
200,000 - 299,999	91	72	26.4	225	156	44.2
300,000 - 399,999	41	77	-46.8	93	174	-46.6
400,000 - 499,999	23	21	9.5	45	40	12.5
500,000 - 599,999	0	10	-100.0	4	20	-80.0
600,000 - 699,999	1	3	-66.7	1	9	-88.9
700,000 - 799,999	0	0	0.0	2	0	200.0
800,000 - 899,999	0	0	0.0	0	1	-100.0
900,000 - 999,999	0	1	-100.0	0	2	-100.0
1,000,000 - 1,249,999	0	1	-100.0	0	1	-100.0
1,250,000 - 1,499,999	0	0	0.0	0	0	0.0
1,500,000 +	0	0	0.0	0	0	0.0
<b>TOTALS</b>	<b>249</b>	<b>200</b>	<b>24.5</b>	<b>539</b>	<b>432</b>	<b>24.8</b>

### AVERAGE & MEDIAN PRICE



DATA SOURCE: Metropolitan Regional Information Systems, Inc. (MRIS)

NOTES: Properties not listed through this Multiple Listing Service are not reflected. The term "sales" represents ratified purchase contracts. Current year information is preliminary and subject to revision. Current year- to- date contract information may not equal the sum of the monthly contract totals reported in